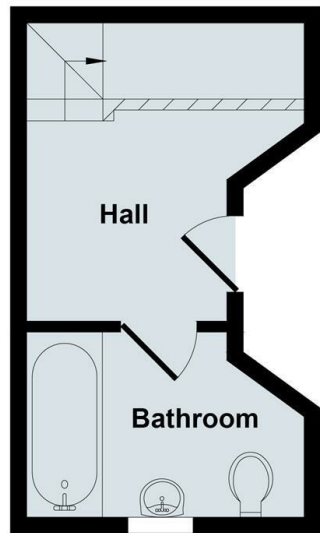




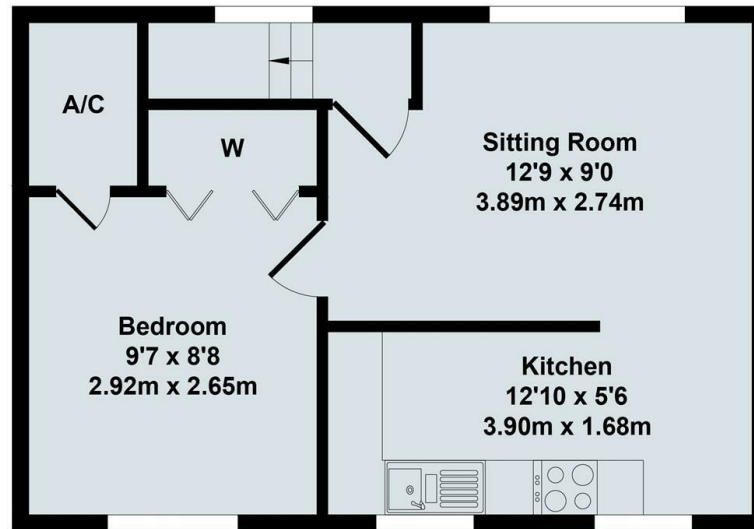
28 Hornbeam Road, Bicester, OX26 3XZ

£1,100 PCM - 7th June 2025.

- One Bedroom Maisonette
- Kitchen and bathroom fitted late 2024
- Mains electricity and water
- Council Tax Band B
- Available unfurnished with white goods
- Double glazing/Electric Heating fitted late 2024
- Allocated parking
- Good condition throughout
- Small rear garden/Allocated parking
- EPC rating



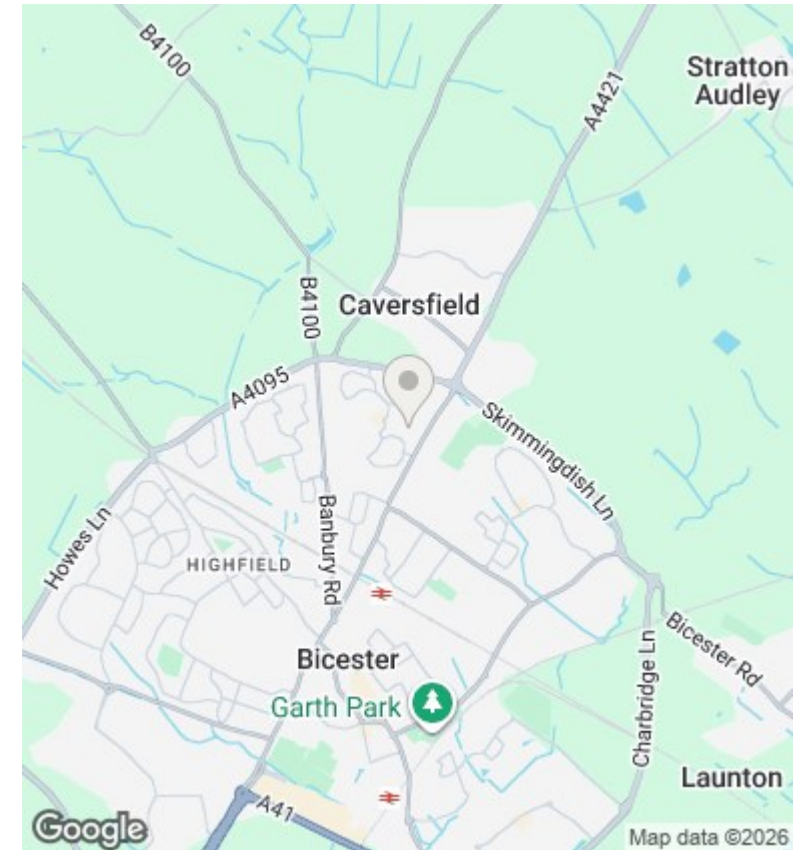
Ground Floor



First Floor



Total Approx. Floor Area 432 Sq.Ft. (40.10 Sq.M.)
 All items illustrated on this plan are included in the "Total Approx Floor Area"



Directions

Viewings

Viewings by arrangement only. Call 01869 226888 to make an appointment.

Council Tax Band

B

EPC Rating:

D

Energy Efficiency Rating		
	Current	Potential
<i>Very energy efficient - lower running costs</i>		
(92 plus) A		
(81-91) B		
(69-80) C		72
(55-68) D	63	
(39-54) E		
(21-38) F		
(1-20) G		
<i>Not energy efficient - higher running costs</i>		
England & Wales	EU Directive 2002/91/EC	